



The Haley Group

Steel Structures

- Foot Bridges
- Pipe Bridges
- Tree Top Walkways
- Foundations

Design, Fabrication & Installation



The Haley Group

About Haley Group

Established 40 years ago – William Haley Eng.

Locations in Somerset, Gloucester, London & Cardiff.

In-House capabilities include..., design, fabrication & installation.

Privately owned. Financially strong. No borrowings.

Manufacturing to EXC4 & Nuclear standard.

USP : Solutioneers, innovators, problem solvers.





The Haley Group

Bridge Examples

- Foot Bridges
- Cycle Bridge
- Pipe Bridges
- Steel Foundations





The Haley Group



Footbridge, span 26m





The Haley Group

- Steel Bridge
- Timber Deck & Handrails
- Assembled in sections using a hand-carry kit, used in remote locations with challenging access.



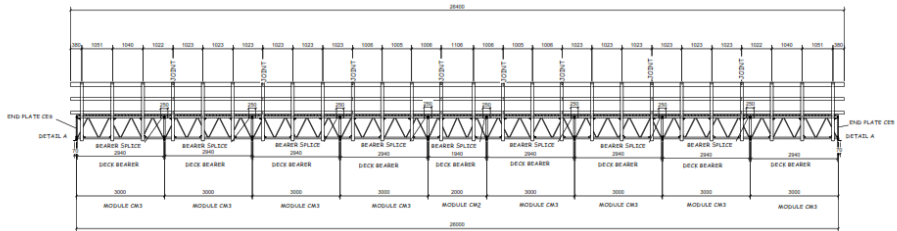


The Haley Group

- Bridge spans up to 26m.
- Widths 1.0m to 2.5m

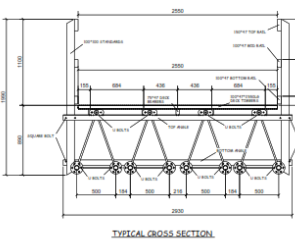
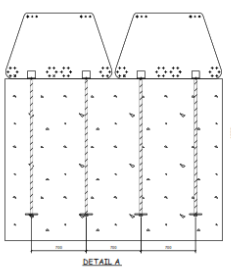


1.20M x 26M TYPE-C RANGER FOOTBRIDGE



MATERIAL SCHEDULE

NO. REQD.	DESCRIPTION
4	26 MODULE TYPE-C CR2
2	26 MODULE TYPE-C CR3
2	END PLATE CR1
2	END PLATE CR2
2	END PLATE CR3
2	END PLATE CR4
2	END PLATE CR5
2	END PLATE CR6
2	END PLATE CR7
2	END PLATE CR8
2	END PLATE CR9
2	END PLATE CR10
2	END PLATE CR11
2	END PLATE CR12
2	END PLATE CR13
2	END PLATE CR14
2	END PLATE CR15
2	END PLATE CR16
2	END PLATE CR17
2	END PLATE CR18
2	END PLATE CR19
2	END PLATE CR20
2	END PLATE CR21
2	END PLATE CR22
2	END PLATE CR23
2	END PLATE CR24
2	END PLATE CR25
2	END PLATE CR26
2	END PLATE CR27
2	END PLATE CR28
2	END PLATE CR29
2	END PLATE CR30
2	END PLATE CR31
2	END PLATE CR32
2	END PLATE CR33
2	END PLATE CR34
2	END PLATE CR35
2	END PLATE CR36
2	END PLATE CR37
2	END PLATE CR38
2	END PLATE CR39
2	END PLATE CR40
2	END PLATE CR41
2	END PLATE CR42
2	END PLATE CR43
2	END PLATE CR44
2	END PLATE CR45
2	END PLATE CR46
2	END PLATE CR47
2	END PLATE CR48
2	END PLATE CR49
2	END PLATE CR50
2	END PLATE CR51
2	END PLATE CR52
2	END PLATE CR53
2	END PLATE CR54
2	END PLATE CR55
2	END PLATE CR56
2	END PLATE CR57
2	END PLATE CR58
2	END PLATE CR59
2	END PLATE CR60
2	END PLATE CR61
2	END PLATE CR62
2	END PLATE CR63
2	END PLATE CR64
2	END PLATE CR65
2	END PLATE CR66
2	END PLATE CR67
2	END PLATE CR68
2	END PLATE CR69
2	END PLATE CR70
2	END PLATE CR71
2	END PLATE CR72
2	END PLATE CR73
2	END PLATE CR74
2	END PLATE CR75
2	END PLATE CR76
2	END PLATE CR77
2	END PLATE CR78
2	END PLATE CR79
2	END PLATE CR80
2	END PLATE CR81
2	END PLATE CR82
2	END PLATE CR83
2	END PLATE CR84
2	END PLATE CR85
2	END PLATE CR86
2	END PLATE CR87
2	END PLATE CR88
2	END PLATE CR89
2	END PLATE CR90
2	END PLATE CR91
2	END PLATE CR92
2	END PLATE CR93
2	END PLATE CR94
2	END PLATE CR95
2	END PLATE CR96
2	END PLATE CR97
2	END PLATE CR98
2	END PLATE CR99
2	END PLATE CR100



William Haley Engineering Limited
100, The Quadrant, Bournemouth, Dorset, BH1 1AB
Tel: 01202 700000 Fax: 01202 700001
www.williamhaley.com



The Haley Group



60 year design life

60 years for both steel and timber with Accoya option.





The Haley Group

- Ranger Bridge – 22m span.
- Installed near John O'Groats





The Haley Group

- Elephant Bridge, with curved walkway.
- Steel Bridge with Timber deck & handrails.





The Haley Group

- Tree Top Walkway, 300m
- Salcey Forest, Northants
- 30m high lookout tower with Ranger Bridge style walkways designed & built for The Forestry Commission.





The Haley Group

- Tree Top Walkway, 60m long
- Culbin Forest Inverness
- 20m high lookout tower with Ranger Bridge style walkways designed & built for The Forestry Commission.





The Haley Group



Dunblane Memorial Bridge

Plean Country Park: Stirling Council





The Haley Group



Balmoral Estate
Balmoral Estates, Ballater.





The Haley Group

● Example of Ranger bridge in remote location





The Haley Group



Aberfoyle
Sustrans, Edinburgh.



- All steel footbridge.
- Bridge span 10m.
- Designed for the Forestry Commission.





The Haley Group

● Steel footbridge on Screw Pile Foundations





The Haley Group

- Screw pile foundations installed for a footbridge over the railway at Ferrybridge, nr Leeds.
- Foundations for bridge, access ramp & station platform.





The Haley Group

- Pipe Bridge 102m long, in Durham for North Yorks Water.
- Scope of Work, included, Design, Fabrication and Installation of structure and foundations – across a valley.
- Bridge route snakes around mature / protected trees.





The Haley Group



Haley Group - Installation team in action





The Haley Group

● Pipe Bridge @ Pirbright for Kier.





The Haley Group

- In summary
- Extensive track record of designing, fabricating & installing bridge structures.
- Standard & Bespoke solutions available.
- Haley Group are ready to start work on your next bridge project.

